

Compliments of



Manufacturer of the *Glidewire*

If you would like additional copies of the angiography atlas or information on our line of interventional products, please contact:

Terumo Interventional Systems

2101 Cottontail Lane, Somerset, New Jersey 08873

Tel: 800•283•7866 Fax: 732•302•3093

www.terumomedical.com

 TERUMO and Glidewire are registered trademarks of Terumo Corporation.

Glidewire is manufactured by Terumo Corporation.

© 2005 Terumo Medical Corporation.

***Achieving
Interventional Efficiency***



 **TERUMO**[®]

Angiography Atlas

French Size Conversion Chart

FRENCH SIZE	INCHES	GAUGE	MM
	.004	36	.10
	.005	35	.13
	.007	34	.18
	.008	33	.20
	.009	32	.23
	.010	31	.25
	.012	30	.30
1	.013	29	.33
	.014	28	.36
	.016	27	.41
	.018	26	.46
	.020	25	.51
	.022	24	.56
	.025	23	.64
2	.026	-	.66
	.028	22	.71
	.032	21	.81
	.035	20	.89
3	.039	-	1.00
	.042	19	1.07
	.050	18	1.27
4	.053	-	1.35
	.059	17	1.50
	.065	16	1.65
5	.066	-	1.68
	.072	15	1.83
6	.079	-	2.00
	.083	14	2.11
7	.092	-	2.34
	.095	13	2.41
8	.105	-	2.67
	.109	12	2.77
9	.118	-	3.00
	.120	11	3.05
10	.131	-	3.33
	.134	10	3.40
11	.144	-	3.66
	.148	9	3.75
12	.158	-	4.00
	.165	8	4.19
13	.170	-	4.32
	.180	7	4.57
14	.184	-	4.67
	.195	-	4.95
15	.197	-	5.00
	.203	6	5.16
16	.210	-	5.33

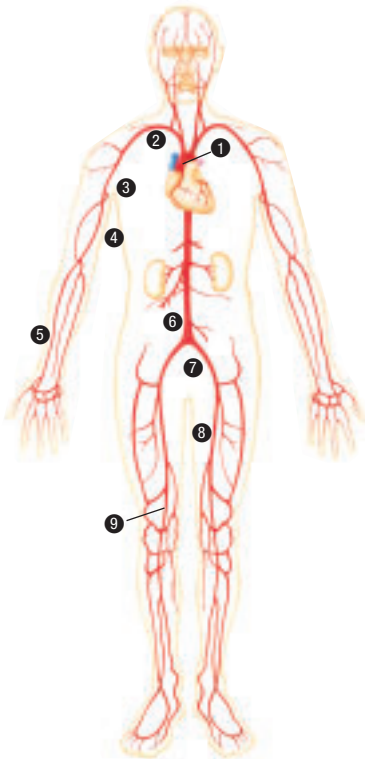
1 INCH = 25.4MM

※ BIRMINGHAM WIRE GAUGE

Table of Contents

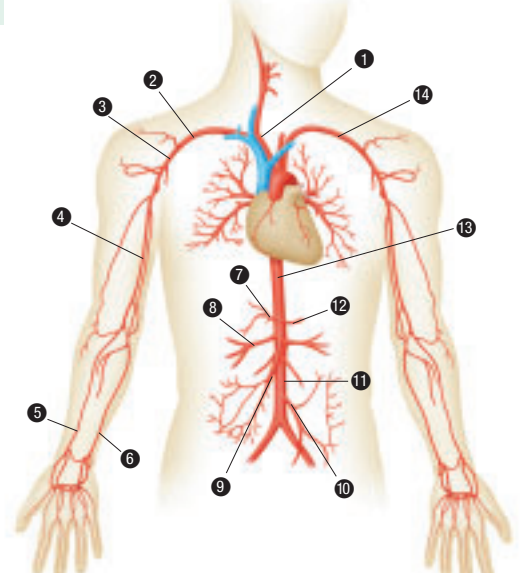
Arteries	2
Upper Circulatory System	3
Lower Circulatory System	4
Abdominal Arteries	5
Hepatic Arteries	6
Portal Vein and Pancreas	7
Cerebral Arteries/ Internal Carotid Artery	8-9
Cerebral Arteries/ Vertebral Artery	10-11
Cerebral Arteries/ External Carotid Artery	12
Thoracic Arteries	13
Coronary Arteries/ RCA	14-15
Coronary Arteries/ LCA	16-17

Arteries



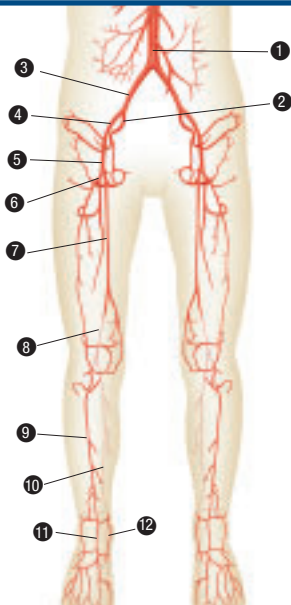
- ❶ Ascending aorta
- ❷ Subclavian artery
- ❸ Axillary artery
- ❹ Brachial artery
- ❺ Radial artery
- ❻ Abdominal aorta
- ❼ Common iliac artery
- ❽ Femoral artery
- ❾ Popliteal artery

Upper Circulatory System



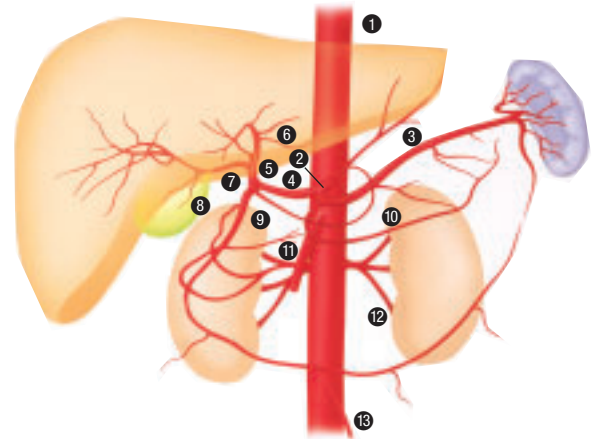
- ❶ Brachiocephalic artery
- ❷ Right subclavian artery
- ❸ Axillary artery
- ❹ Brachial artery
- ❺ Radial artery
- ❻ Ulnar artery
- ❼ Celiac trunk
- ❽ Right renal artery
- ❾ Superior mesenteric artery
- ❿ Inferior mesenteric artery
- ⓫ Abdominal aorta
- ⓬ Splenic artery
- ⓭ Descending thoracic aorta
- ⓮ Left subclavian artery

Lower Circulatory System



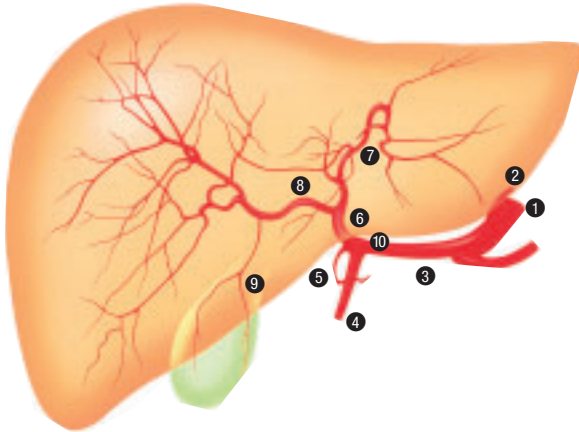
- | | |
|---------------------------|------------------------------|
| ① Abdominal aorta | ⑦ Superficial femoral artery |
| ② Internal iliac artery | ⑧ Popliteal artery |
| ③ Common iliac artery | ⑨ Anterior tibial artery |
| ④ External iliac artery | ⑩ Posterior tibial artery |
| ⑤ Common femoral artery | ⑪ Dorsalis pedis |
| ⑥ Profunda femoris artery | ⑫ Plantar arch |

Abdominal Arteries



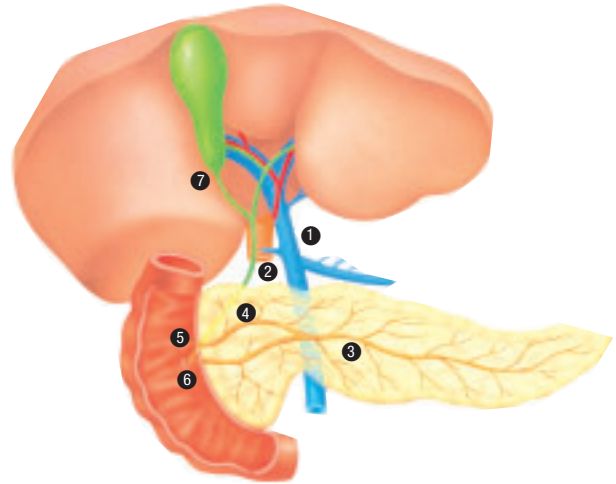
- | | |
|-------------------------|--------------------------------|
| ① Abdominal aorta | ⑧ Cystic artery |
| ② Celiac trunk | ⑨ Gastroduodenal artery |
| ③ Splenic artery | ⑩ Transverse pancreatic artery |
| ④ Common hepatic artery | ⑪ Superior mesenteric artery |
| ⑤ Proper hepatic artery | ⑫ Left renal artery |
| ⑥ Left hepatic artery | ⑬ Inferior mesenteric artery |
| ⑦ Right hepatic artery | |

Hepatic Arteries



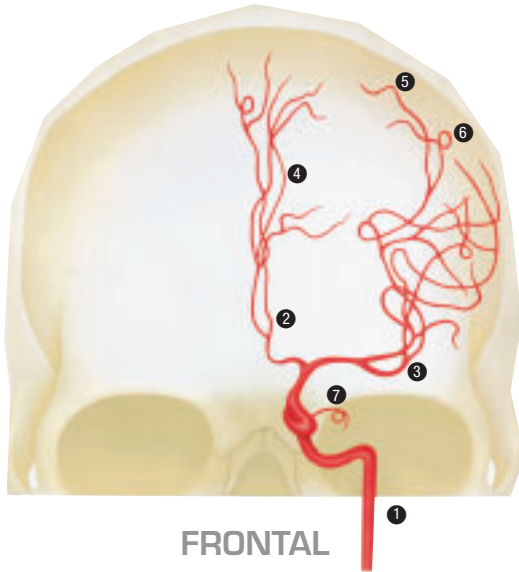
- ① Celiac trunk
- ② Left gastric artery
- ③ Common hepatic artery
- ④ Gastroduodenal artery
- ⑤ Right gastric artery
- ⑥ Proper hepatic artery
- ⑦ Left hepatic artery
- ⑧ Right hepatic artery
- ⑨ Cystic artery
- ⑩ Middle hepatic artery

Portal Vein and Pancreas



- ① Portal vein
- ② Common bile duct
- ③ Pancreatic duct
- ④ Accessory pancreatic duct
- ⑤ Lesser duodenal papilla
- ⑥ Greater duodenal papilla
- ⑦ Cystic duct

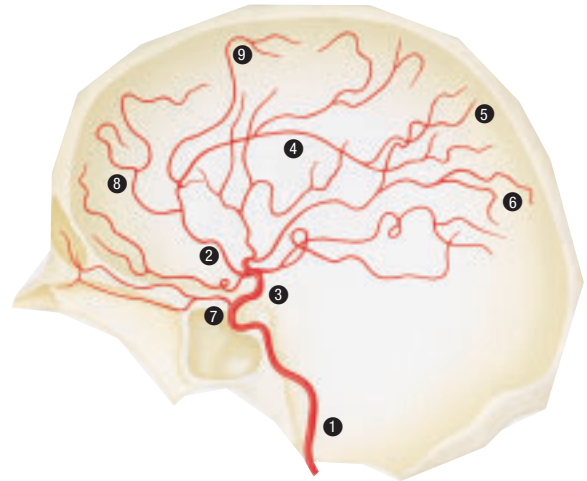
Cerebral Arteries



FRONTAL

- ① Internal carotid artery
- ② Anterior cerebral artery
- ③ Middle cerebral artery
- ④ Pericallosal artery
- ⑤ Anterior parietal artery

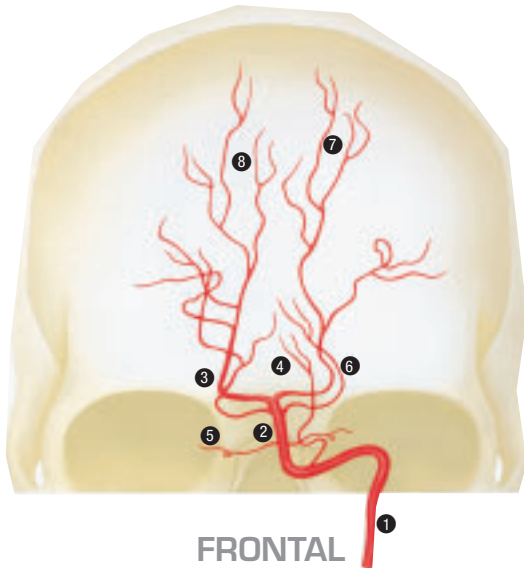
Internal Carotid Artery



LATERAL

- ⑥ Posterior parietal artery
- ⑦ Ophthalmic artery
- ⑧ Anterior internal frontal artery
- ⑨ Middle internal frontal artery

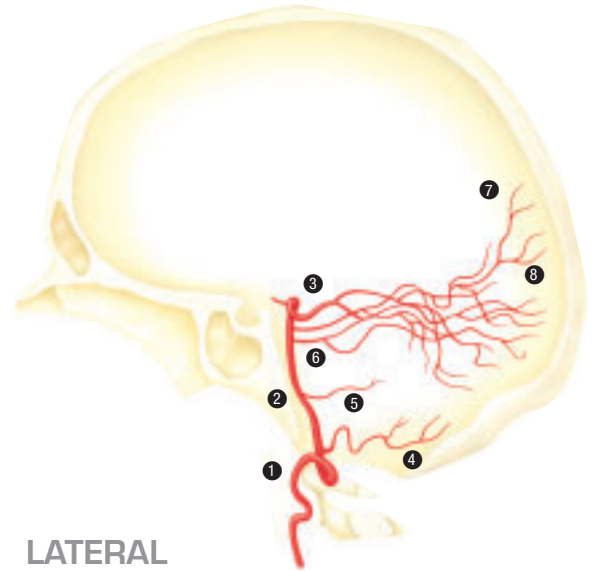
Cerebral Arteries



FRONTAL

- 1 Vertebral artery
- 2 Basilar artery
- 3 Posterior cerebral artery
- 4 Posterior inferior cerebellar artery

Vertebral Artery

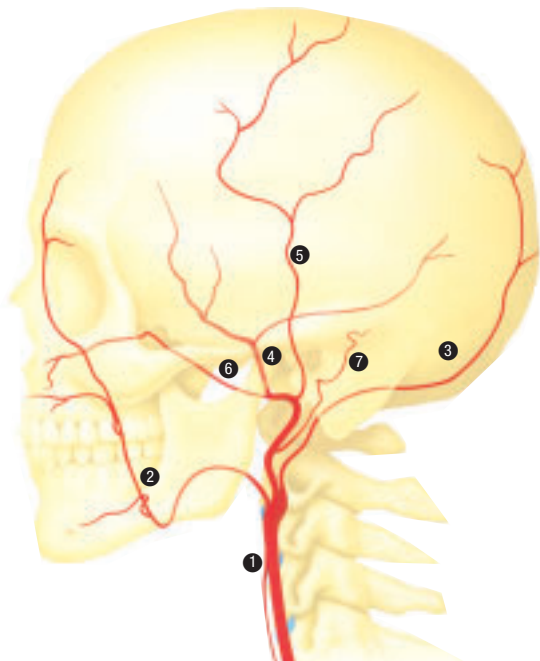


LATERAL

- 5 Anterior inferior cerebellar artery
- 6 Superior cerebellar artery
- 7 Parieto-occipital artery
- 8 Calcarine artery

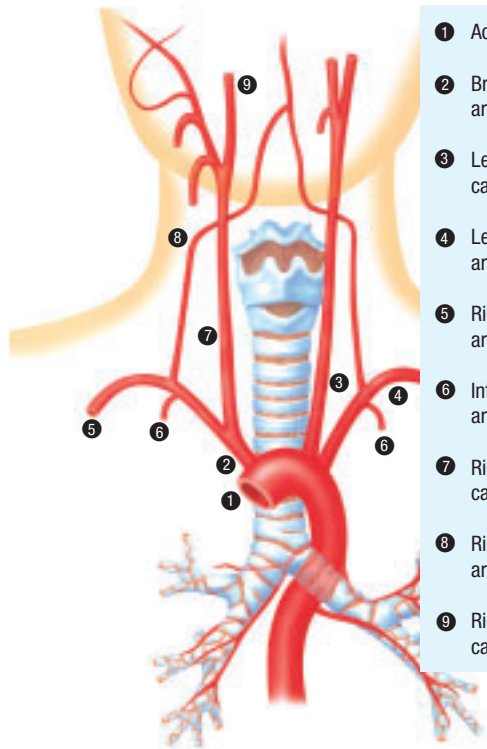
Cerebral Arteries

External Carotid Artery



- ① External carotid artery
- ② Facial artery
- ③ Occipital artery
- ④ Middle meningeal artery
- ⑤ Superficial temporal artery
- ⑥ Maxillary artery
- ⑦ Posterior auricular artery

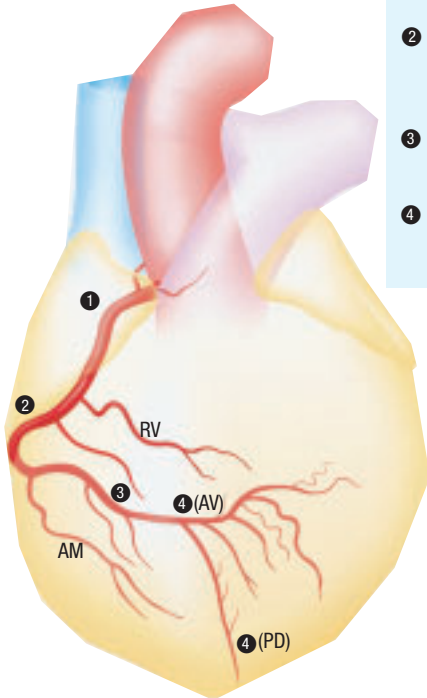
Thoracic Arteries



- ① Aortic arch
- ② Brachiocephalic artery
- ③ Left common carotid artery
- ④ Left subclavian artery
- ⑤ Right subclavian artery
- ⑥ Internal thoracic artery
- ⑦ Right common carotid artery
- ⑧ Right vertebral artery
- ⑨ Right internal carotid artery

Coronary Arteries

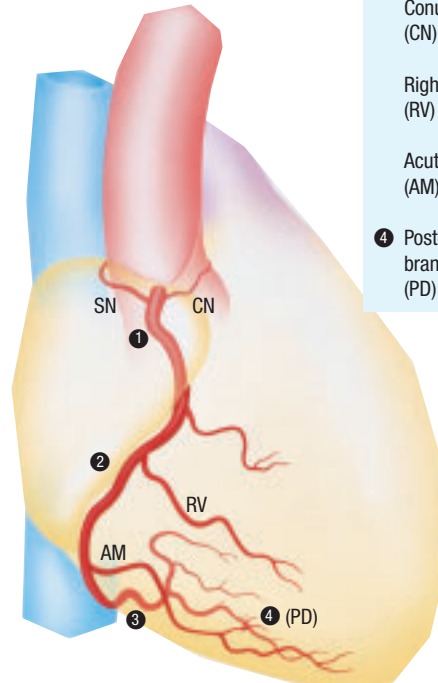
LAO



- 1 R. Coronary artery proximal (RCA proximal)
- 2 R. Coronary artery middle (RCA middle)
- 3 R. Coronary artery distal (RCA distal)
- 4 AV node artery (AV)

RCA

RAO

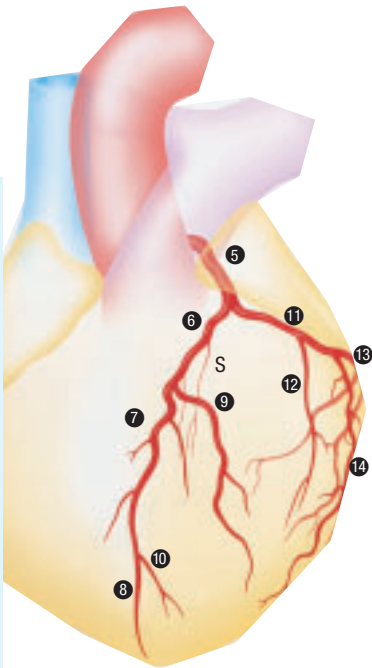


- 1 Sinus node artery (SN)
 - 2 Conus artery (CN)
 - 3 Right ventricular branch (RV)
 - 4 Acute marginal branch (AM)
- 4 Posterior descending branch (PD)

Coronary Arteries

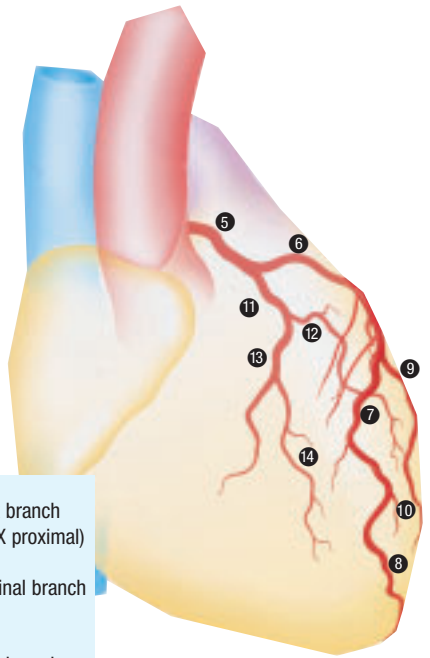
LCA

- 5 Left Main Trunk (LMT)
- 6 L. Anterior descending branch proximal (LAD proximal)
- 7 L. Anterior descending branch middle (LAD middle)
- 8 L. Anterior descending branch distal (LAD distal)
- 9 1st Diagonal branch (D1)
- 10 2nd Diagonal branch (D2)
- Septal branch (S)



LAO

- 11 L. Circumflex branch proximal (LCX proximal)
- 12 Obtuse Marginal branch (OM)
- 13 L. Circumflex branch distal (LCX distal)
- 14 Postero lateral branch (PL)



RAO